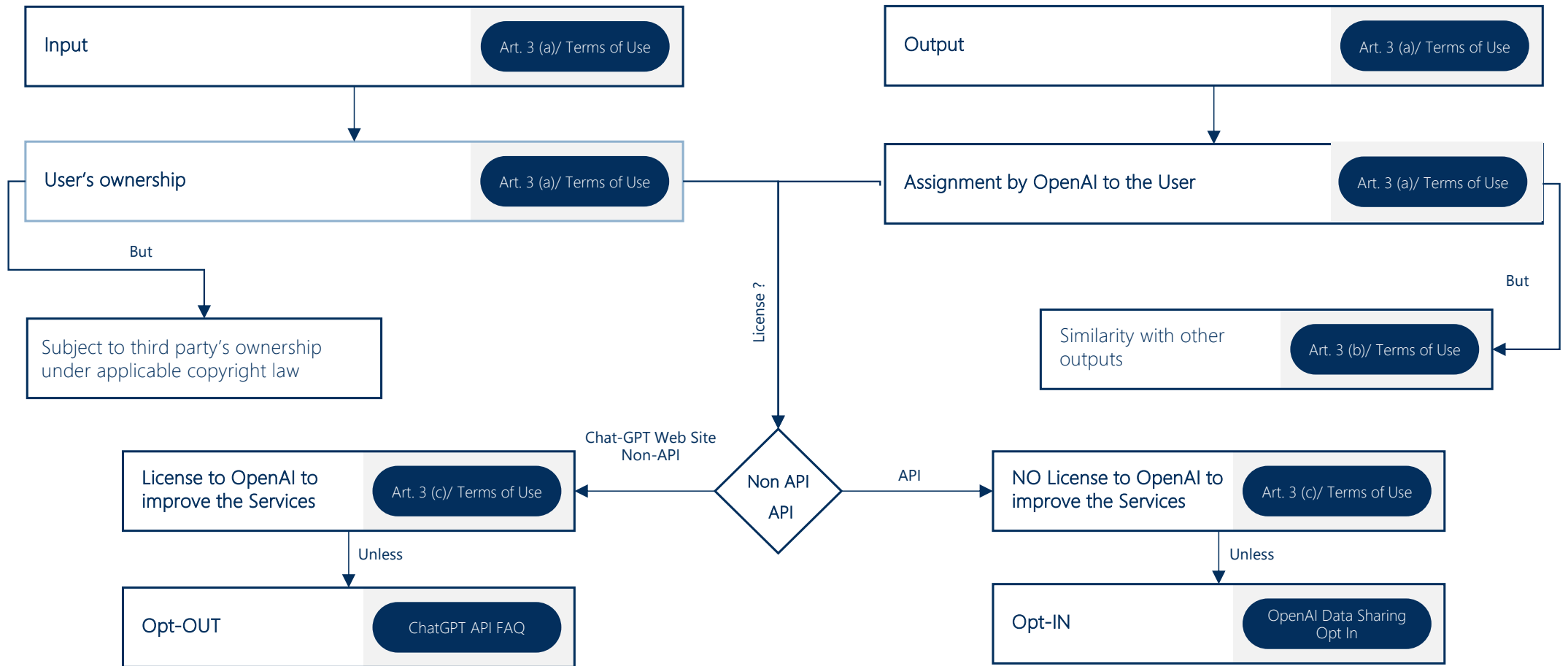


Chat-GPT' Input and Output's Ownership and License

FRANÇOIS WÉRY



CHAT-GPT : License on user's content



CHAT-GPT TERMS OF USE

CONTENT OWNERSHIP

You may provide input to the Services (“Input”), and receive output generated and returned by the Services based on the Input (“Output”). Input and Output are collectively “Content.” As between the parties and to the extent permitted by applicable law, **you own all Input**. Subject to your compliance with these Terms, OpenAI hereby **assigns to you all its right, title and interest in and to Output**.

[Art. 3 \(a\)/ Terms of Use](#)

SIMILARITY OF CONTENT

Due to the nature of machine learning, Output may not be unique across users and the **Services may generate the same or similar output for OpenAI or a third party**. For example, you may provide input to a model such as “What color is the sky?” and receive output such as “The sky is blue.” Other users may also ask similar questions and receive the same response. Responses that are requested by and generated for other users are not considered your Content.

[Art. 3 \(b\)/ Terms of Use](#)

USE OF CONTENT TO IMPROVE SERVICES

We **do not use Content that you provide to or receive from our API** (“API Content”) to develop or improve our Services. **We may use Content from Services other than our API** (“Non-API Content”) to help develop and improve our Services. You can read more here about [how Non-API Content may be used to improve model performance](#).

[Art. 3 \(c\)/ Terms of Use](#)

OPT-OUT

We understand that in some cases you may not want your data used to improve model performance. You can opt out of having your data used to improve our models by filling out this form..

[ChatGPT API FAQ](#)

API

The ChatGPT API will allow developers to integrate ChatGPT into their own applications, products, or services.

[OpenAI Data Opt Out Request](#)

CHAT-GPT OWN OPINION ON THE COPYRIGHT

ANSWER BY CHAT-GPT ON THE COPYRIGHTS ON THE OUTPUT

"As an AI language model, I do not own the copyright of the text that I generate since I am simply a tool used to generate text based on the input and instructions provided by the user. The copyright of the text generated by me would depend on the context and ownership of the input used to generate the text. If the input is owned by the user, then the copyright of the text generated would also belong to the user. However, if the input used to generate the text is copyrighted by someone else, then the copyright of the text generated would still belong to the original owner of the input. It is important to note that copyright laws can vary depending on the country and jurisdiction, and it is advisable to seek legal advice to understand how copyright laws apply to your specific situation."

Interrogation on
March 23, 2023